

lomography

MINI Diana

www.lomography.com/dianamini



MORE THAN JUST THE PETITE SISTER

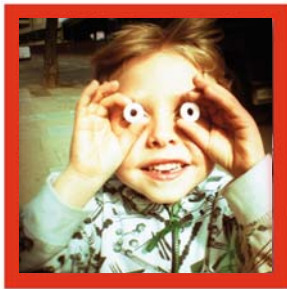


The Diana Mini is remarkably reminiscent of the Diana F+ family, due to its retro body and unmistakable turquoise top. Weighing in at only 235g (about half a pound), it is adorably petite in comparison. The "Mini" moniker only describes its size, not its unrivalled possibilities: this tiny 35mm camera is packed with features like multiple frame formats, multi and long time exposures, overlapping images, and cable release compatibility. All of these options serve as a vast source of inspiration. Apart from all these new features, the Diana Mini creates those soft, blurry, dreamy-toned Diana images that are traditional with the other Diana family members. The creative options don't end here: just one flick of the fingertip and the Diana Mini joins the rare range of gadgets that can actually produce the very special 35 mm square format or half-frame.



Exclusive 35mm square format

neat, proper, classy & very rare, up to 36 shots per film



Legendary half-frame

shoot forever: up to 72 shots per film



Not only can you fit many shots onto one roll of film, you can fit the Diana Mini into the tiniest pocket! There's no excuse to leave the Diana Mini at home; its ultra-handly, light and compact body fits into the smallest of spaces.

FEATURES

- * Square and rectangular half-frame formats at the flick of a switch
- * Takes all types of 35mm film
- * Requires standard 35mm film development
- * Ultra-compact and pocket-sized
- * Multiple exposure functionality
- * 'B' mode for long exposures
- * Cable release attachment – a Diana first!
- * Sunny and cloudy exposure settings
- * Diana Flash Plug (Diana Flash available separately)
- * Overlap frames across photos for endless abstract panoramas
- * Tripod mount
- * Compatible with the stunning Diana Flash



PACKAGE INCLUDES

- * Diana Mini Camera
- * Carrying Strap
- * Lens Cap
- * „Shoot Forever“ Diana Mini Book
- * Manual

(no flash included in this package)

ORDER DETAILS

Article No.: hp500
WS: 22,50 EUR net
MRSP: 50,00 EUR
P.U.: 12



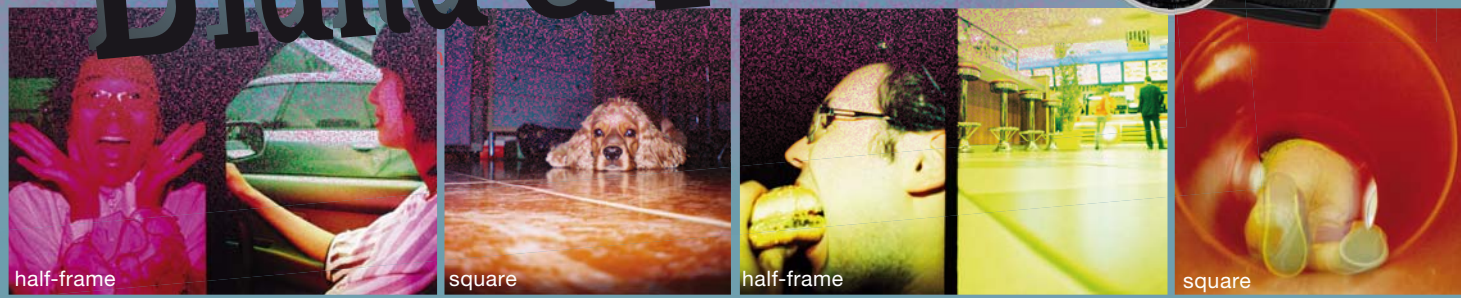
CONTACT

Lomographische AG

Hollergasse 41 - A-1150 Wien - tel. +43 (0)1 899 44 0 - fax +43 (0)1 899 44 22 - orders@lomography.com - www.lomography.com

lomography

Mini Diana & Flash



www.lomography.com/dianamini



MORE THAN JUST THE PETITE SISTER

The Diana Mini is remarkably reminiscent of the Diana F+ family, due to its retro body and unmistakable turquoise top. Weighing in at only 235g (about half a pound), it is adorably petite in comparison. The "Mini" moniker only describes its size, not its unrivalled possibilities: this tiny 35mm camera is packed with features like multiple frame formats, multi and long time exposures, overlapping images and cable release compatibility.

A FLASHY SENSATION

After stealing its retro styled flash from her older sister, the petite bundle of energy is ready to take over the night! No matter if there is action on the dance-floor, a starry summer-night or nightly skinny-dipping, the Diana Flash+ combined with the rainbow of 12 color gels will drench their subjects in the brightest colors.

There's no excuse to leave the Diana Mini at home; its ultra-handy, light and fits into the tiniest pocket!

SQUARE OR HALF?

But the creative options don't end here: just one flick of the fingertip and the Diana Mini joins the rare range of gadgets that can actually produce the very rare 35 mm square format and rectangular half-frame. Choose square format to pack up to 36 square shots on your film or shoot forever with the legendary half-frame option to have two shots side-by-side onto one exposure. This means you can hit the shutter button up to 72 times without changing film!

FEATURES

- * Square and rectangular half-frame formats at the flick of a switch
- * Takes all types of 35mm film
- * Requires standard 35mm film development
- * Ultra-compact and pocket-sized
- * Multiple exposure functionality
- * 'B' mode for long exposures
- * Cable release attachment – a Diana first!
- * Sunny and cloudy exposure settings
- * Diana F+ Flash Adaptor (to use with standard hotshoe flashes)
- * Diana Flash+ with color gel filters for color-splashing
- * Overlap frames across photos for endless abstract panoramas
- * Tripod mount

ORDER DETAILS

Article No.: hp550
WS: 40,50 EUR net
MRSP: 90,00 EUR
P.U.: 6

PACKAGE INCLUDES

- * Diana Mini Camera
- * Diana Flash+
- * Colored gel flash filters
- * Diana F+ Flash adaptor
- * „Shoot Forever“ Diana Mini Book
- * Lens cap & neckstrap
- * Instruction Manual

CONTACT

Lomographische AG - Hollergasse 41 - A-1150 Wien
tel. +43 (0)1 899 44 0 - fax +43 (0)1 899 44 22
orders@lomography.com - www.lomography.com

